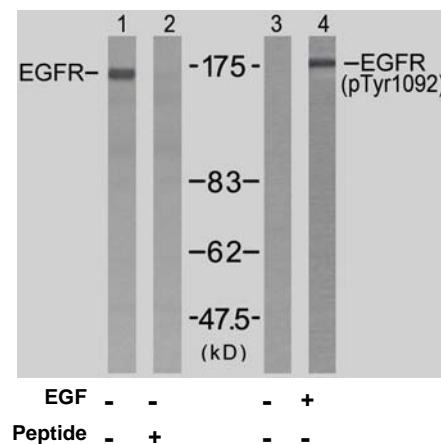


Rabbit anti EGFR (pTyr1092)

- Catalog Number:** pAP11081
Amount: 100µl (for 10 Westerb Blotting)
Form of Antibody: Rabbit IgG in phosphate buffered saline (without Mg²⁺ and Ca²⁺), pH 7.4, 150mM NaCl, 0.02% sodium azide and 50% glycerol.
Storage/Stability: Store at -20°C/1 year
Immunogen: The antiserum was produced against synthesized phosphopeptide derived from human EGFR around the phosphorylation site of tyrosine1092 (P-E-Y^P-I-N).
Purification: The antibody was affinity-purified from rabbit antiserum by affinity-chromatography using epitope-specific phosphopeptide. The antibody against non-phosphopeptide was removed by chromatogramphy using non-phosphopeptide corresponding to the phosphorylation site.
Specificity/Sensitivity: EGFR (phospho-tyr1092) antibody detects endogenous levels of EGFR only when phosphorylated at tyrosine 1092.
Reactivity: Human, Mouse, Rat
Applications: WB: 1:1000
Swiss-Prot No. : P00533
References: Buerger C, et al. (2003) J Biol Chem; 278(39): 37610-21.
Wang XQ, (2003) J Biol Chem; 278(49): 48770-8.
Saito T, et al. (2004) Endocrinology; 145(9): 4232-43.
Pao W, et al. (2004) Proc Natl Acad Sci U S A; 101(36): 13306-11.



Western blot analysis of extracts from HUVEC cells using EGFR (Ab-1092) antibody (AP21074, Lane 1 and 2) and EGFR (phospho-Tyr1092) antibody (pAP11081, Lane 3 and 4).

For Research Use Only

Contact & Ordering Information: Angio-Proteomie, 11 Park Drive, Suite 12, Boston, MA 02215, USA. Fax: (480) 247-4337, angioproteomie@gmail.com